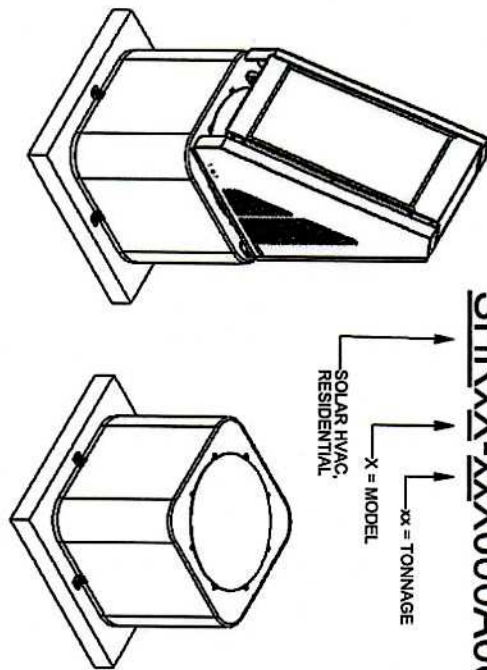


LAIRE, INC - WIND LOAD CERTIFICATION OF MECHANICAL UNIT CABINETS AND STEEL TIE DOWN CLIPS: AT GRADE MOUNTED APPLICATIONS

XC-XXXXXXX000AXX-X2
 X = UNIT TYPE
 XX = TONNAGE
 OPTION 2: SOLAR HVAC



SHRXX-XX000A000

GENERAL NOTES:

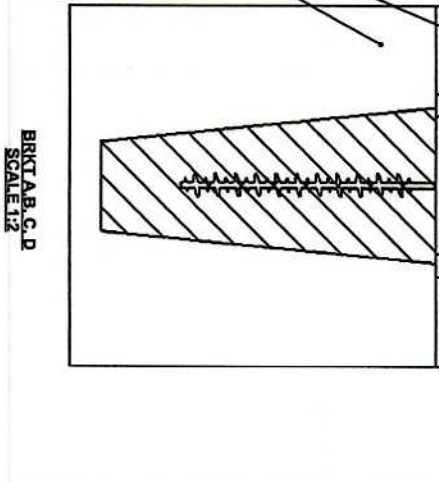
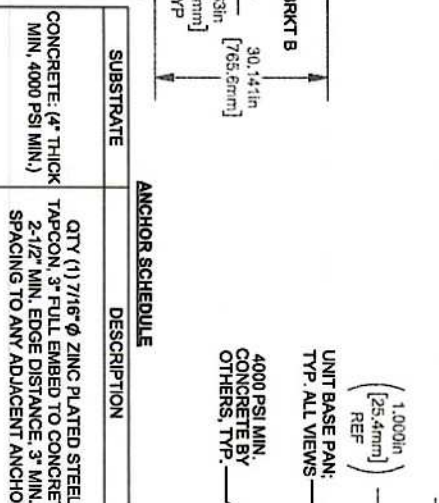
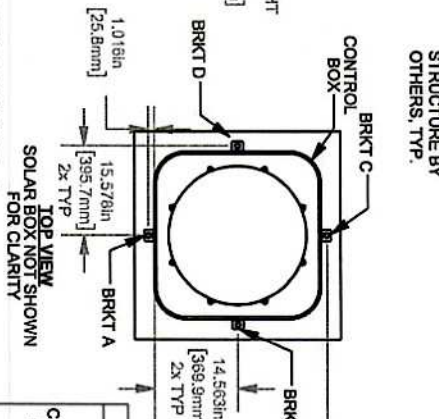
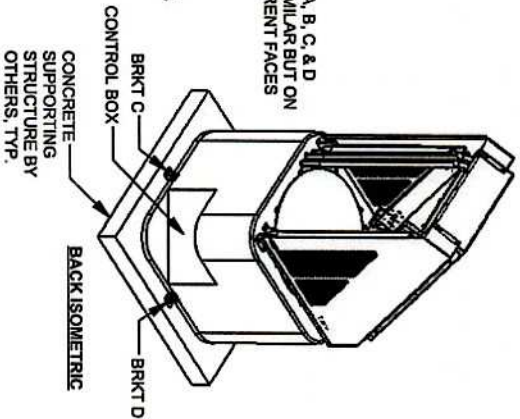
1. THIS SYSTEM HAS BEEN DESIGNED AND SHALL BE FABRICATED IN ACCORDANCE WITH THE REQUIREMENTS OF THE FLORIDA BUILDING CODE EIGHTH EDITION (2023) & ASCE 7. THIS SYSTEM MAY BE USED WITHIN AND OUTSIDE THE HIGH VELOCITY HURRICANE ZONE. THIS DESIGN IS NOT INTENDED TO CERTIFY IMPACT RESISTANCE OF THE MECHANICAL UNIT CABINETS.
2. ALL DIMENSION AND THE MINIMUM WEIGHT (126 LB MINIMUM) OF MECHANICAL UNIT SHALL CONFORM TO LIMITATIONS STATED HEREIN. ALL MECHANICAL SPECIFICATIONS (CLEAR SPACE, TONNAGE, ETC.) SHALL BE AS PER MANUFACTURER RECOMMENDATIONS AND ARE THE EXPRESS RESPONSIBILITY OF THE CONTRACTOR.
3. TAPCONS REFERRED TO HEREIN SHALL BE ASTM B633 ZINC PLATED STEEL OR EQUIVALENT ONLY, INSTALLED TO 4000 PSI MIN CONCRETE. SEE ANCHOR SCHEDULE FOR ANCHOR REQUIREMENTS. ALL SHEET METAL SCREWS USED TO FASTEN BRACKETS TO MECHANICAL UNITS SHALL BE #12 (14 MIN THREADS PER INCH) ASTM B633 OR EQUIVALENT ONLY. PROVIDE (5) PITCHES MINIMUM PAST THE THREAD PLANE FOR SHEET METAL SCREWS. ALL FASTENERS SHALL HAVE APPROPRIATE CORROSION PROTECTION TO PREVENT ELECTROLYSIS.
4. ALL CONCRETE SPECIFIED HEREIN IS NOT PART OF THIS CERTIFICATION. AS A MINIMUM, ALL CONCRETE SHALL BE STRUCTURAL CONCRETE 4" MINIMUM THICK AND SHALL HAVE MINIMUM COMPRESSIVE STRENGTH OF 4000 PSI, UNLESS NOTED OTHERWISE.
5. THE CONTRACTOR IS RESPONSIBLE TO INSULATE ALL MEMBERS FROM DISSIMILAR MATERIALS TO PREVENT ELECTROLYSIS.
6. ELECTRICAL GROUND, WHEN REQUIRED, TO BE DESIGNED & INSTALLED BY OTHERS.
7. THE ADEQUACY OF ANY EXISTING STRUCTURE TO WITHSTAND SUPERIMPOSED LOADS SHALL BE VERIFIED BY THE ONSITE DESIGN PROFESSIONAL AND IS NOT INCLUDED IN THIS CERTIFICATION, EXCEPT AS EXPRESSLY PROVIDED HEREIN, NO ADDITIONAL CERTIFICATIONS OR AFFIRMATIONS ARE INTENDED.
8. THE SYSTEM DETAILED HEREIN IS GENERIC AND DOES NOT PROVIDE INFORMATION FOR A SPECIFIC SITE. FOR SITE CONDITIONS DIFFERENT FROM THE CONDITIONS DETAILED HEREIN, A LICENSED ENGINEER OR REGISTERED ARCHITECT SHALL PREPARE SITE SPECIFIC DOCUMENTS FOR USE IN CONJUNCTION WITH THIS DOCUMENT.
9. WATER-TIGHTNESS OF EXISTING HOST SUBSTRATE SHALL BE THE FULL RESPONSIBILITY OF THE INSTALLING CONTRACTOR. CONTRACTOR SHALL ENSURE THAT ANY REMOVED OR ALTERED WATERPROOFING MEMBRANE IS RESTORED AFTER FABRICATION AND INSTALLATION OF STRUCTURE PROPOSED HEREIN. THIS ENGINEER SHALL NOT BE RESPONSIBLE FOR ANY WATERPROOFING OR LEAKAGE ISSUES WHICH MAY OCCUR AS WATER-TIGHTNESS SHALL BE THE FULL RESPONSIBILITY OF THE INSTALLING CONTRACTOR.
10. FOR AN EXPLANATION OF EXPOSURE CATEGORIES THAT ACCOMPANY THE VULT WIND SPEEDS USED IN THIS DOCUMENT, SEE SECTION 26.7 OF ASCE 7.

DESIGN CRITERIA:
 ASCE 7 VULT = 200 MPH, Δ
 EXPOSURE 'D' AT GRADE INSTALLATION ONLY


DESIGN NOTES:
 THIS SYSTEM HAS BEEN DESIGNED IN ACCORDANCE WITH ASCE 7 AND THE FLORIDA BUILDING CODE EIGHTH EDITION (2023) FOR USE WITHIN AND OUTSIDE THE HIGH VELOCITY HURRICANE ZONE. THE DESIGN CRITERIA CONSIDERS ASCE 7 SECTION 29 FOR "OTHER STRUCTURES - SOLID FREESTANDING WALLS" INSTALLATIONS AT GRADE. ALL DESIGN PARAMETERS ARE IN ACCORDANCE WITH ASCE 7 CHAPTERS 26 & 29.

REV	ECO #	DESCRIPTION	DATE	CHANGED BY	APPROVED BY	THE INFORMATION CONTAINED IN THIS DRAWING IS THE SOLE PROPERTY OF LAIRE, LLC. ANY REPRODUCTION IN PART OR WHOLE WITHOUT THE WRITTEN PERMISSION OF LAIRE, LLC IS PROHIBITED.	TOLERANCES	WEIGHT (lb)	MATERIAL	DRAWING SCALE	SHEET	SIZE
A	N/A	RELEASED FOR SUBMITTAL ONLY	3/1/2023	ADB	JF		±1/32", ±0.031", ±2"	Various	SEE BOM	1:32	1 OF 5	A
B	25.07.09	Updated to FBC 2023, was 1x#10, VULT was 175 mph	7/1/2025	ADB								
C												
D												
E												
F												
G												
H												

NOTE: THESE ISOMETRIC ARE INTENDED FOR
DIAGRAMMATICAL PURPOSES ONLY; ALTERNATE
LAIRE UNITS MAY VARY IN APPEARANCE.



REV	ECO #	DESCRIPTION	DATE	CHANGED BY	APPROVED BY
A	N/A	RELEASED FOR SUBMITTAL ONLY	3/1/2023	ADB	
B	25.07.09	Updated to FBC 2023; was 1x810; Valt was 175mph	7/9/2025	ADB	JF
C					
D					
E					
F					
G					
H					



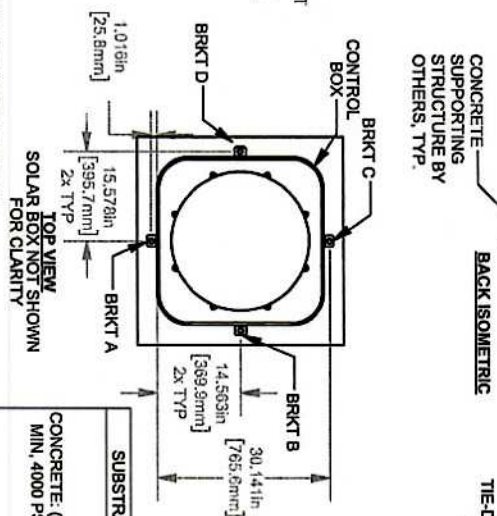
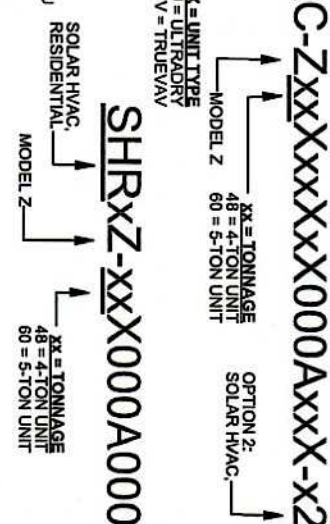
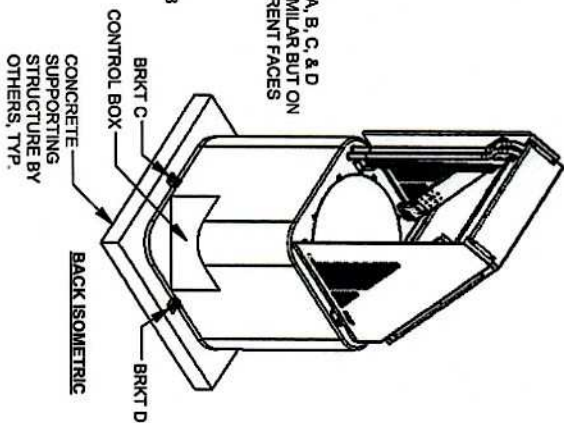
THE INFORMATION CONTAINED IN THIS DRAWING IS THE SOLE PROPERTY OF IAIRE, LLC. ANY REPRODUCTION IN PART OR WHOLE WITHOUT THE WRITTEN PERMISSION OF IAIRE, LLC, IS PROHIBITED.

IAIRE, LLC

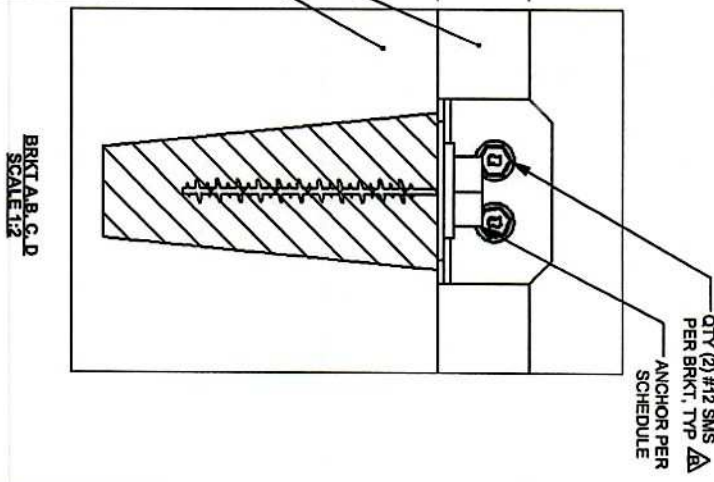
6805 HILLSDALE COURT, INDIANAPOLIS, INDIANA 46250
 TEL: (800) 866-2281 WWW.IAIRE.COM FAX: (317) 906-2770

TOLERANCES ± 1/32", ± 0.031", ± 2°	WEIGHT (lb) Various	PART NUMBER SHR-X-xx-X000A000 - Wind Loading PART DESCRIPTION Residential Split Wind Loading
MATERIAL SEE BOM	DRAWING SCALE 1:32	SHEET 2 OF 5
		SIZE A

NOTE: THESE ISOMETRIC ARE INTENDED FOR DIAGRAMMATICAL PURPOSES ONLY. ALTERNATE LAIRE UNITS MAY VARY IN APPEARANCE.



ANCHOR SCHEDULE	
SUBSTRATE	DESCRIPTION
CONCRETE, (4" THICK MIN, 4000 PSI MIN.)	QTY (1) 7/16" Ø ZINC PLATED STEEL TAPCON, 3" FULL EMBED TO CONCRETE 2-1/2" MIN. EDGE DISTANCE, 3" MIN. SPACING TO ANY ADJACENT ANCHOR



REV	ECO #	DESCRIPTION	DATE	CHANGED BY	APPROVED BY
A	N/A	RELEASED FOR SUBMITTAL ONLY	3/1/2023	ADB	JF
B	25.07.09	Updated to FBIC 2023, was 1x#10, Volt was 175miph	7/9/2025	ADB	JF
C					
D					
E					
F					
G					
H					

IAIRE

THE INFORMATION CONTAINED IN THIS DRAWING IS THE SOLE PROPERTY OF IAIRE, LLC. ANY REPRODUCTION OR TRANSMISSION OF THIS DRAWING WITHOUT THE WRITTEN PERMISSION OF IAIRE, LLC, IS PROHIBITED.

IAIRE, LLC

8805 HILLSDALE COURT, INDIANAPOLIS, INDIANA 46250
TEL: (603) 866-2281 WWW.IAIRE.COM FAX: (317) 805-2770

TOLERANCES ±1/32", ±0.031", ±2°	WEIGHT (lb) Various	MATERIAL SEE BOM	DRAWING SCALE 1:32	SHEET 3 OF 5	SIZE A
---	-------------------------------	----------------------------	------------------------------	------------------------	------------------

IAIRE

THE INFORMATION CONTAINED IN THIS DRAWING IS THE SOLE PROPERTY OF IAIRE, LLC. ANY REPRODUCTION OR TRANSMISSION OF THIS DRAWING WITHOUT THE WRITTEN PERMISSION OF IAIRE, LLC, IS PROHIBITED.

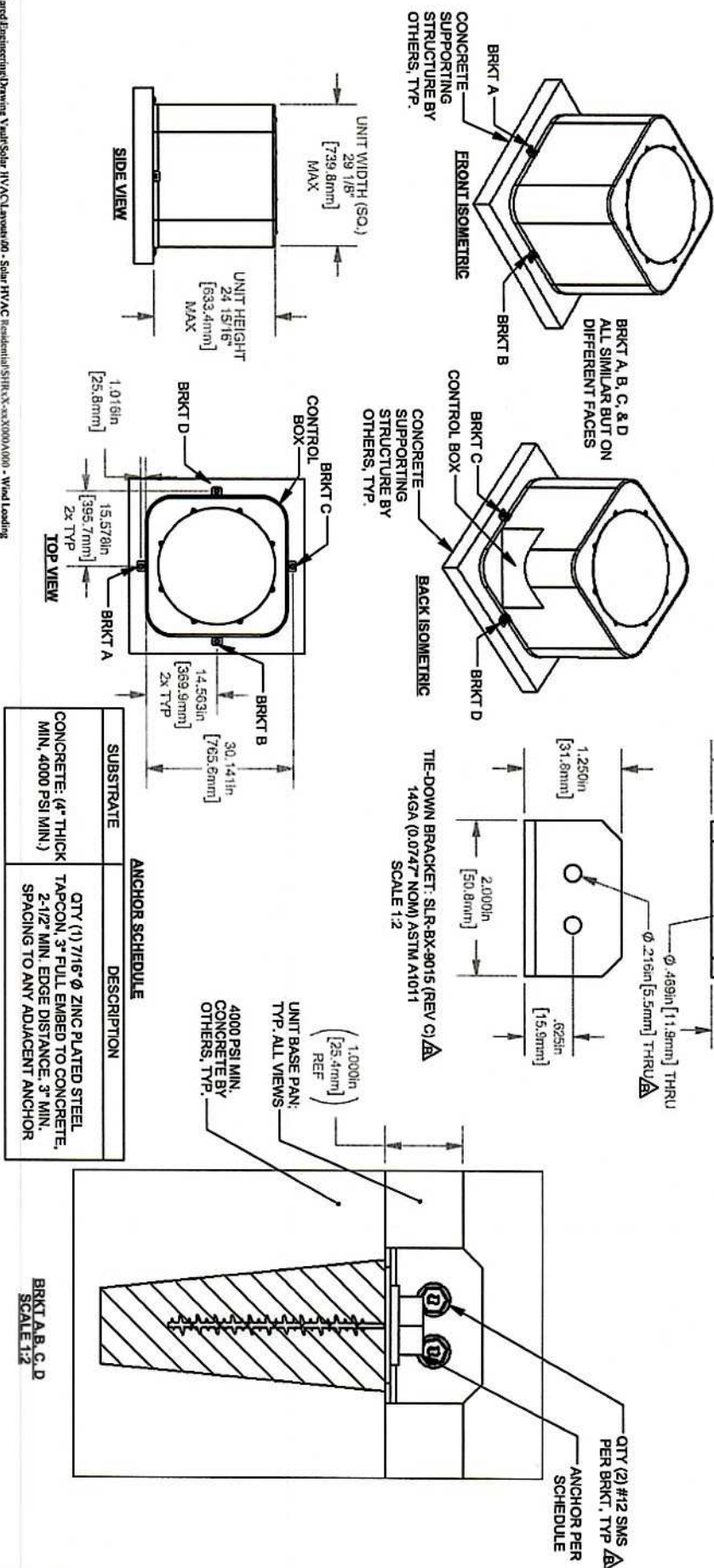
IAIRE, LLC

8805 HILLSDALE COURT, INDIANAPOLIS, INDIANA 46250
TEL: (603) 866-2281 WWW.IAIRE.COM FAX: (317) 805-2770

TOLERANCES ±1/32", ±0.031", ±2°	WEIGHT (lb) Various	MATERIAL SEE BOM	DRAWING SCALE 1:32	SHEET 3 OF 5	SIZE A
---	-------------------------------	----------------------------	------------------------------	------------------------	------------------

IAIRE, INC - WIND LOAD CERTIFICATION OF MECHANICAL UNIT CABINETRY AND STEEL TIE DOWN CLIPS: AT GRADE MOUNTED APPLICATIONS

NOTE: THESE ISOMETRIC ARE INTENDED FOR DIAGRAMMATICAL PURPOSES ONLY. ALTERNATE IAIRE UNITS MAY VARY IN APPEARANCE.



XXC-ZXXXXXX000AXX-X

XX = TONNAGE
24 = 2-TON UNIT
36 = 3-TON UNIT

MODEL Z

X = UNIT TYPE
U = ULTRADRY
V = TRUE/AV

ANCHOR SCHEDULE	
SUBSTRATE	DESCRIPTION
CONCRETE: (4" THICK MIN., 4000 PSI MIN.)	QTY (1) 7/16" Ø ZINC PLATED STEEL TAPCON, 3" FULL EMBED TO CONCRETE, 2-1/2" MIN. EDGE DISTANCE, 3" MIN. SPACING TO ANY ADJACENT ANCHOR

BRKT A, B, C, D
SCALE 1:2

REV	ECO #	DESCRIPTION	DATE	CHANGED BY	APPROVED BY
A	N/A	RELEASED FOR SUBMITTAL ONLY	3/1/2023	ADB	
B	25.07.09	Updated to FBC 2023, was 1x#10, Volt was 175miph	7/9/2025	ADB	JF
C					
D					
E					
F					
G					
H					



6865 HILLSDALE COURT, INDIANAPOLIS, INDIANA 46250
TEL: (800) 898-2281 WWW.IAIRE.COM FAX: (317) 806-2770

THE INFORMATION CONTAINED IN THIS DRAWING IS THE SOLE PROPERTY OF IAIRE, LLC. ANY REPRODUCTION IN PART OR WHOLE WITHOUT THE WRITTEN PERMISSION OF IAIRE, LLC IS PROHIBITED.

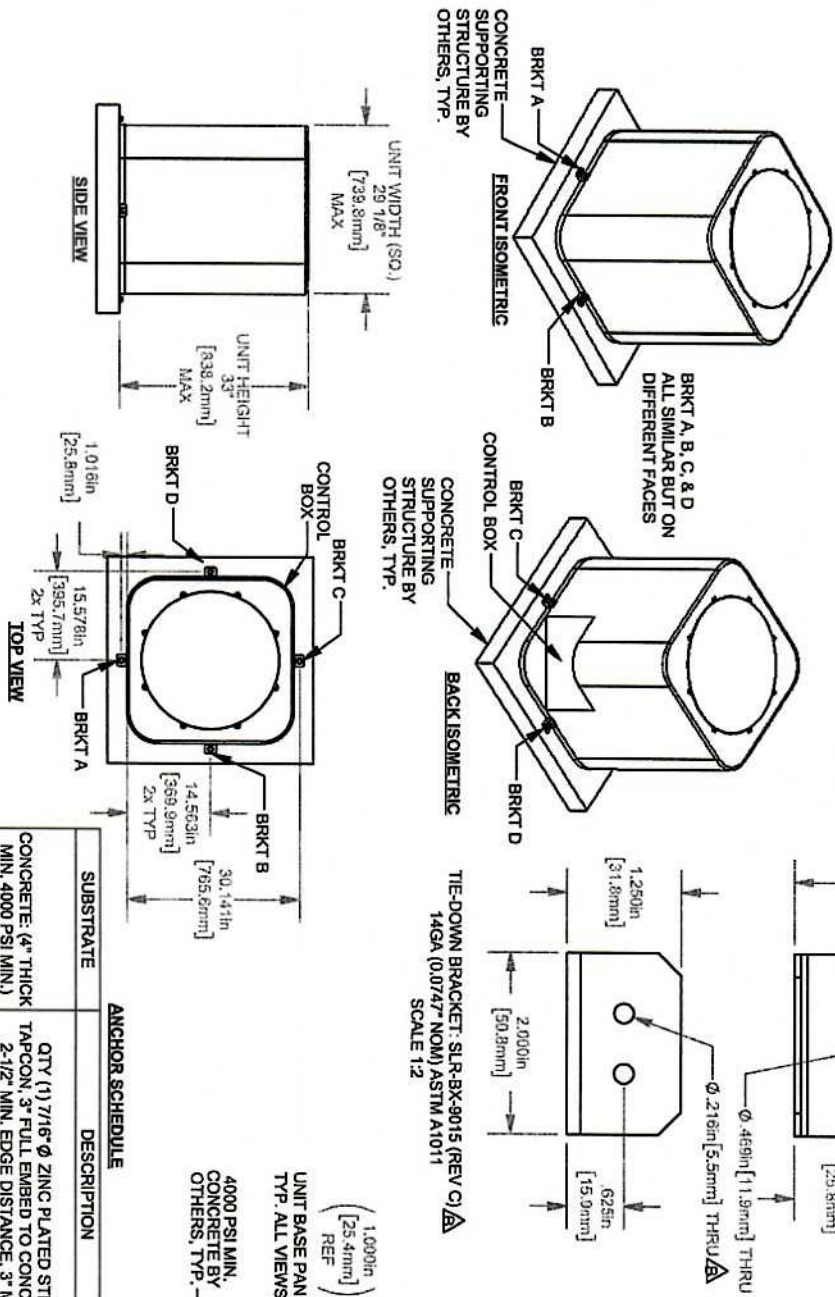
PART DESCRIPTION
Residential Split Wind Loading

TOLERANCES	WEIGHT (lb)
±.132", ±.031", ±.2"	Various

MATERIAL	DRAWING SCALE	SHEET	SIZE
SEE BOM	1:32	4 OF 5	A

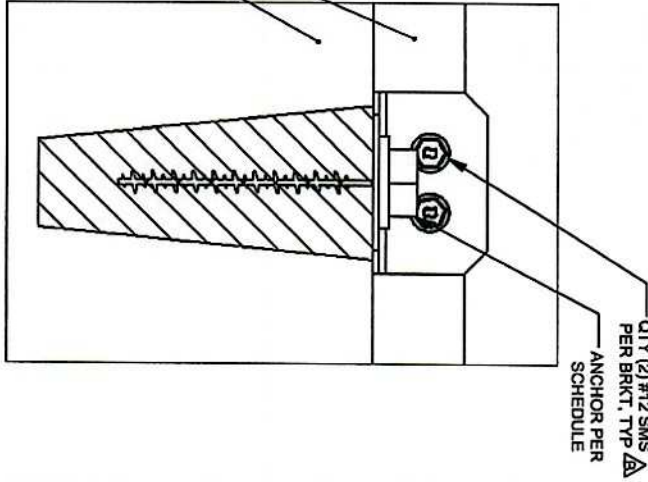
IAIRE, INC - WIND LOAD CERTIFICATION OF MECHANICAL UNIT CABINETRY AND STEEL TIE DOWN CLIPS: AT GRADE MOUNTED APPLICATIONS

NOTE: THESE ISOMETRIC ARE INTENDED FOR DIAGRAMMATICAL PURPOSES ONLY; ALTERNATE IAIRE UNITS MAY VARY IN APPEARANCE.



SUBSTRATE	DESCRIPTION
CONCRETE: (4" MIN, 4000 PSI MIN.)	QTY (1) 7/16" Ø ZINC PLATED STEEL TAPCON, 3" FULL EMBED TO CONCRETE, 2-1/2" MIN. EDGE DISTANCE, 3" MIN. SPACING TO ANY ADJACENT ANCHOR

QTY (1) 7/16\"/>



XXC-ZXXXXXX000AXX-X

X = UNIT TYPE
U = ULTRADRY
V = TRUEVAV

XX = TONNAGE
48 = 4-TON UNIT
60 = 5-TON UNIT

MODEL Z

REV	ECO #	DESCRIPTION	DATE	CHANGED BY	APPROVED BY
A	N/A	RELEASED FOR SUBMITTAL ONLY	3/1/2023	ADB	JF
B	25.07.09	Updated to FBC 2023, was 1x#10, Vult was 175mph	7/9/2025	ADB	JF
C					
D					
E					
F					
G					
H					



IAIRE, LLC
 6005 HILLSDALE COURT, INDIANAPOLIS, INDIANA 46250
 TEL: (800) 999-2281 WWW.IAIRE.COM FAX: (317) 806-2770

THE INFORMATION CONTAINED IN THIS DRAWING IS THE SOLE PROPERTY OF IAIRE, LLC. ANY REPRODUCTION IN PART OR WHOLE WITHOUT THE WRITTEN PERMISSION OF IAIRE, LLC IS PROHIBITED.

PART NUMBER	MATERIAL	DRAWING SCALE	SHEET	SIZE
SHRXX-XX000A000 - Wind Loading	Residential Split Wind Loading	SEE BOM	1:32	5 OF 5