



Solar HVAC 230V | Model "C" 4-Ton Condensing Unit

Part Number

SHRDC- 480\*00A000 - \*\*

Unit Type

D - Cooling Only

Voltage (\*)

G - 230 VAC 1Φ  
H - 230 VAC 3Φ

Options (\*\*)

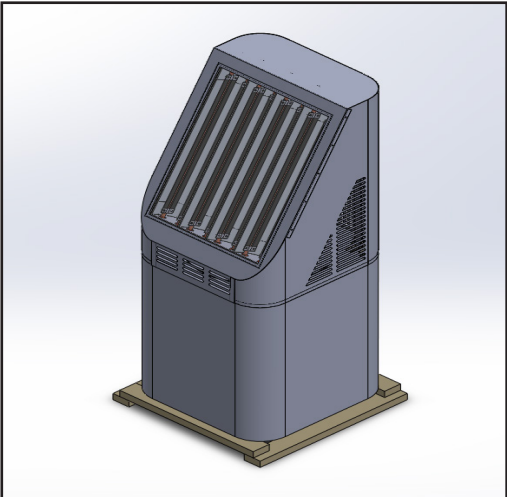
0 - No Options  
D - Condenser Coil Coating (UG)  
Y - Start Up  
7 - Phase Monitor

Description

A Solar HVAC Residential Unit is more than twice as efficient as a standard residential split unit.

A solar box equipped with chambers lined with specialty reflective film is mounted to the top of the condensing unit. Through a patented process, ambient light is converted to thermal energy which reduces the energy demand on the compressor.

ultraRES takes the highest efficiency condensing unit (made with the patented solar HVAC system) and pairs it with an air handling unit that comes equipped with a 4" filter box with a MERV 13 filter and VOC sensor. The 4" MERV 13 filter provides more than 4 times the filter efficiency of a standard 1" pleated filter. The VOC sensor is mounted in the space and provides the owner with feedback on how clean or dirty the air is inside the space.



Units come with a 1-year parts warranty and 10 year compressor warranty.



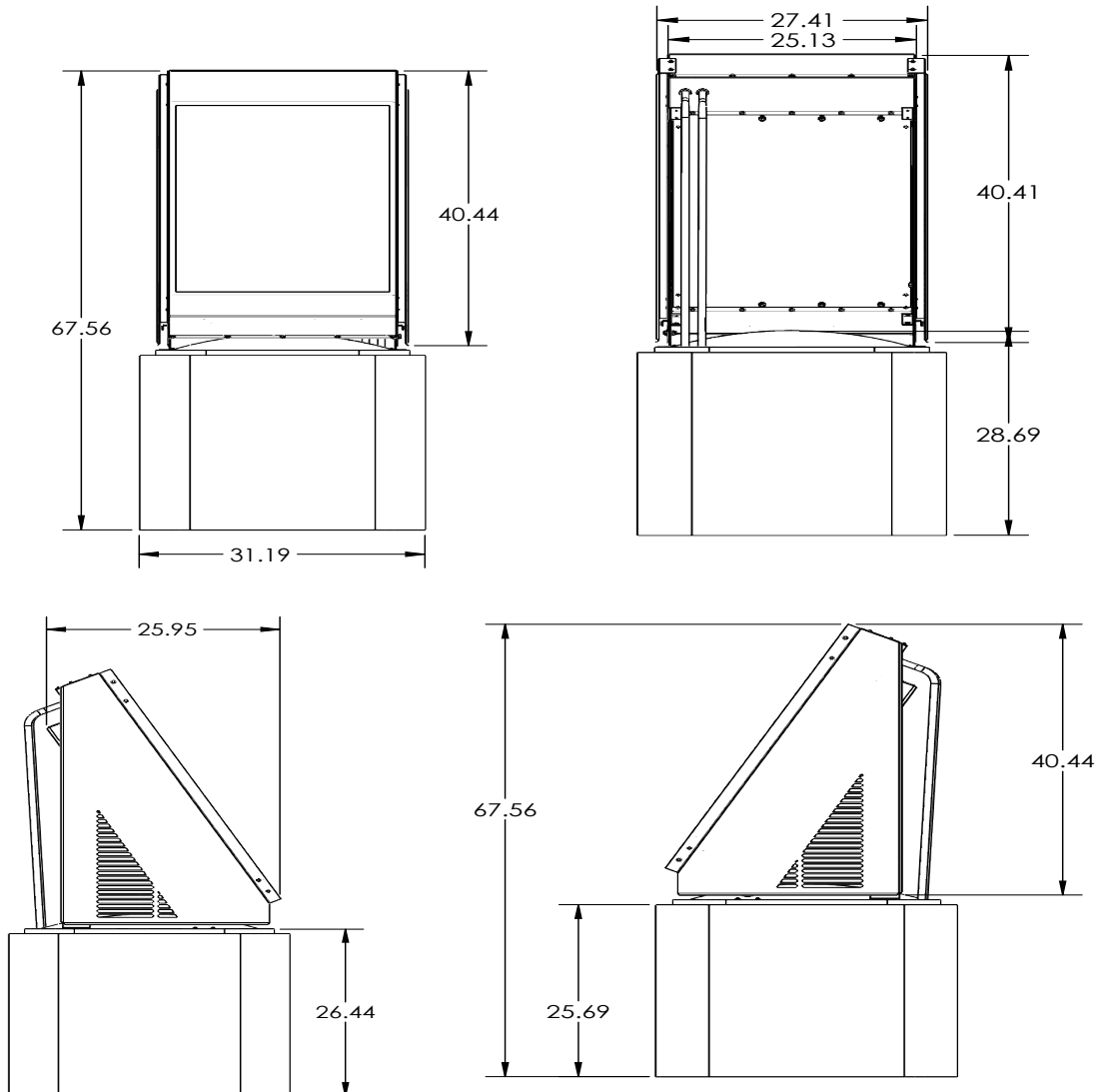
# Dimensions

## SHRDC-48 | Solar HVAC Model "C" Residential Condenser Dimensions

Model		SHRDC-48 (4 Ton)		(Outdoor Unit) Model		SHRDC-48 (4 Ton)	
Code	Outdoor Code			Outdoor Weight	Net - Lbs (kg)	297 (135)	
Outdoor Power Supply	V/Hz	208-230V/60Hz			*Gross - Lbs (kg)	302 (137)	
Cooling	Capacity	Btu/h	48000	Electrical Data 208/230 1ϕ	Minimum Circuit Ampacity	25.2 A	
		W	4174		Max. Overcurrent Protection	40 A	
	EER	Btu/h, W	11.5	Electrical Data 208/230 3ϕ	Minimum Circuit Ampacity	14.5 A	
	SEER		14		Max. Overcurrent Protection	25 A	
Compressor	Type	Twin-rotary DC		Outdoor Noise Level (dB(A))		79	
Outdoor Dimension	Packing (WxHxD)	Inch	32-3/8 x 32-3/8 x 69-3/8	Operation Temperatures (°F)		125	

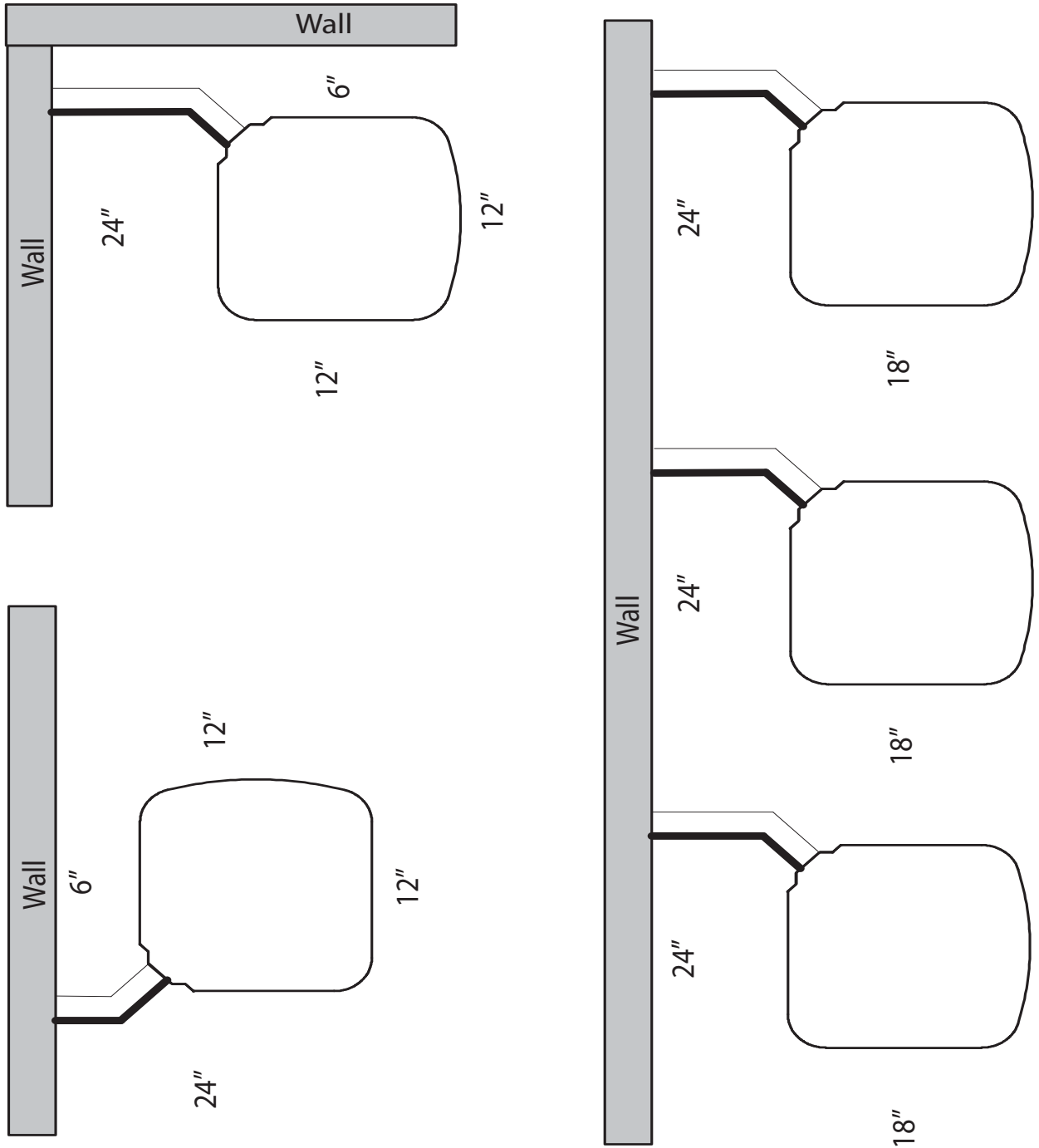
**Note:**  
 Unit should be UL 1995 listed  
 Unit should be OG-100 Certified to the Solar certification on ICC901/SRCC100  
**Note:** Face solar panels south for optimal performance.

\* Gross = Net Weight + Shipping Box



## SHRDC-48 | Solar HVAC Model "C" Residential Condenser Clearances

SHR\*-\*\* Clearances | v 2.00 | 05/20/22



\* - Unit Type (Cooling Only (D) or Heat Pump (P))

\*\* - BTU's - x 1000 (24, 36, 48, 60)