

Double Wall - York

Part Number

DW - \* - \*

- unit/ton**
- SUN36
  - PRED36
  - PRED712
  - SUN15
  - SUN1725
  - MIL2540
  - CSPLIT712
  - CSPLIT1525

- options**
- A - Standard Installation
  - HD - Hinged Doors
  - Z - Special

Description

iAIRE takes a customer supplied unit and takes the fiberglass insulation off and installs insulation that raises the insulation value to R-15 and a 2nd metal panel to sandwich the insulation in between the metal. This allows that the air flowing through the unit does not encounter anything but metal and allows the unit on the air side to be washed and cleaned if necessary.



## York Chassis Reference Guide

	YORK	JOHNSON CONTROLS	COLEMAN	LUXAIRE
CHASSIS CLASSIFICATION	UNIT PART NUMBER	UNIT PART NUMBER	UNIT PART NUMBER	UNIT PART NUMBER
PRED 36	ZR/ZH 037,049,061,078,090; ZJ 037,049,061; XP/ZF 078,090; DM/DF 090,102; DH 078,090,102	JA3-JA5 ZH/ZJ; J06-J07 ZH/ZF/ZR/XP	ZU/ZK A3-07; ZS 06-07; ZW/ZV A3-A5; DS/DL 07-08; DU 06-08; XA/BA 07	ZU/ZK A3-07; ZS 06-07; ZW/ZV A3-A5; DS/DL 07-08; DU 06-08; XA/BA 07
PRED 712	ZF/XP/ZH/ZR 102,120,150; ZJ 078,090,102,120,150; DF 078,120; DM/DH 120,150; DJ 150; DR 090,120,150	J06-J12 ZJ; J08-J12 ZH/ZF/ZR/XP;	ZU/ZK/ZS 08-12; ZW 06-12; DW 12; DK 07-10; DS 06,10; DU 10-12; DL 06,10,12; XA/BA 06,08-12	ZU/ZK/ZS 08-12; ZW 06-12; DW 12; DK 07-10; DS 06,10; DU 10-12; DL 06,10,12; XA/ BA 06,08-12
SUN 36	ZR/XP/DJ/ZJ 036,048,060; ZF/DR/DM/DF/DH/DCG/DCE 036,048,060,072	J03-J06 ZF; J03-J05 ZR/XP/ZJ/ZH	XA/DW/DG 03-05; ZS/ZK/DK/BA 03-A6	XA/DW/DG 03-05; ZS/ZK/DK/BA 03-A6
SUN 15	ZF/DM 180	J15 ZF	ZS/DU/DL/BA 15	ZS/DU/DL/BA 15
SUN 1725	ZF/DH 210-300; DJ/ZJ/ZR/DR 180-300; XP 180-240; DM 240-300	J28,J20,J25 ZF; J15,J18,J20,J25 ZR/ ZJ	ZW/ZK/DW/WW/WK/DK 15-25; ZS/DU 18-25; DL 20-25; XA 15-20; BA/BB 20	ZW/ZK/DW/WW/WK/DK 15-25; ZS/DU 18-25; DL 20-25; XA 15-20; BA/BB 20
MIL 2540	Z42/Z43/Z34			
PRDSPLIT 712	<b>Condensing Unit</b> YC090-150 / YD120-150  <b>AHU</b> NC090-150 / ND120-150			
PRDSPLIT 1525	<b>Condensing Unit</b> YC180-300 / YD180-240  <b>AHU</b> NC180-300 / ND180-240			
RESIDENTIAL SPLIT	<b>Condensing Unit</b> YHJD42,48,60  <b>AHU</b> AHE42D,48D,60D			

# TECHNICAL DATA SHEET

Code: NT-59-P  
Version: 1.0

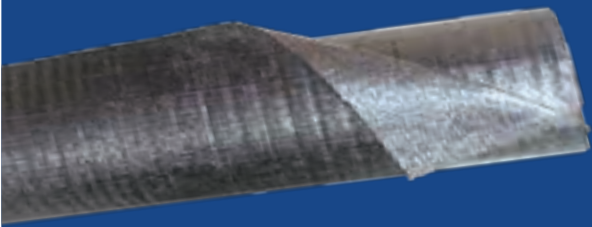


## REFLECTIVE THERMAL INSULATION

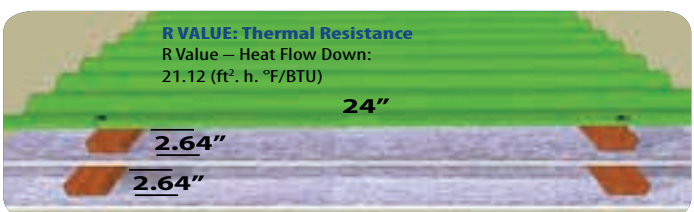
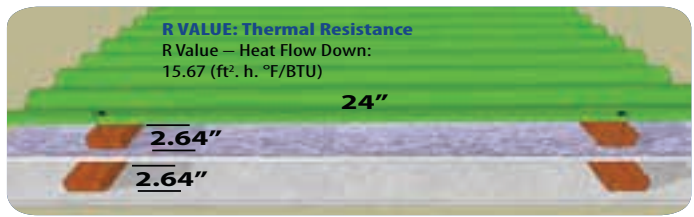
# Prodex **AD5** ALUMINUM FOIL + POLYETHYLENE FOAM + ALUMINUM FOIL

**0.20" closed cell polyethylene foam sandwiched between pure aluminum on both sides**

Reflective thermal insulation developed according to the highest standards of quality. Designed to save energy by eliminating radiant heat emitted by roofs, floors and walls.



AD 5 INSULATION (ALUMINUM FOIL + POLYETHYLENE FOAM + ALUMINUM FOIL)		
DIMENSIONS AND TOLERANCES OF THE STANDARD PRODUCT		
THICKNESS: 0.20 ± 0.013 (in)	LENGTH: ± 11 (in)	WIDTH: 4 ± 0.032 (ft)
TECHNICAL CHARACTERISTICS OF THE PRODUCT		
CHARACTERISTICS	VALUE	STANDARD
FOAM CELL STRUCTURE	CLOSED	-
AVERAGE WEIGHT OF ft <sup>2</sup>	0.0512lb/ft <sup>2</sup>	-
WATER RESISTANCE	WATERPROOF	Dir. UEAtc
WATER VAPOR TRANSMISSION	0.05 perms (gr/ft <sup>2</sup> *h*in.hg)	ASTM E 96/IRAM 1735
FLAME INDEX	0	ASTM E-84-99
SMOKE DEVELOPMENT	15	ASTM E-84-99
EMITANCE	0.03	ASTM C-1371-98
FUNGAL RESISTANCE	NO GROWTH	ASTM C 1338
CORROSIVENESS	PASS	ASTM C-1224
PLIABILITY	NO CRACKING	ASTM C-1224
HUMIDITY RESISTANCE	PASS	ASTM C-1224
BLEEDING AND DELAMINATION	NO BLEEDING / NO DELAMINATION	ASTM C-1258
TENSILE STRENGTH AT BREAK (MD)	10.4 LbF/inch	ASTM D-638
OPERATING TEMPERATURE	-4 °f / 176 °f	ASTM C-1224
R VALUE ( Heat Flow Down)	* A: 15.67; B : 21.12 (ft <sup>2</sup> -h-°F/Btu)	ASTM STP1116



- It is recommended a distance of 1.20 meters to 2.20 meters between supports
- Do not install at soffits when the insulation can be permanently exposed to UV radiation



[www.Insulation4Less.com](http://www.Insulation4Less.com)

