



Double Wall - Carrier

Part Number

DW - \* - \*

- unit/ton**
- CHAS 1
  - CHAS 2
  - CHAS 3
  - CHAS 4
  - CHAS 5
  - CHAS 6/7
  - CHAS 8/9
  - CSPLIT26
  - CSPLIT712
  - CSPLIT1525

- options**
- A - Standard Installation
  - HD - Hinged Doors
  - Z - Special

Description

iAIRE takes a customer supplied unit and takes the fiberglass insulation off and installs insulation that raises the insulation value to R-15 and a 2nd metal panel to sandwich the insulation in between the metal. This allows that the air flowing through the unit does not encounter anything but metal and allows the unit on the air side to be washed and cleaned if necessary.



## Carrier Chassis Reference Guide

	CARRIER	BRYANT	ICP
CHASSIS CLASSIFICATION	UNIT PART NUMBER (all units vertical except TC 18,21,25,29)		
<b>CHASSIS 1</b>	48/50FC 04-05; 50TCQ 04-05; 48/50GC 04-05, LC 04; 50HCQ 04; 48/50 TF, TM 004-007; 48TJ 004-007; 48HJ 004-006; 50TJ 004-006; 50HJ, HJQ 004-006	580J, 558J 04-06; 548J 04-05; 581, 551J 04; 549J 04	PAH, PGH, RAS, RGS 036-060; RHS 036-048; RAH, RGH, RHH 036; PAE 036-072; PAS, PGE, PGS, PHS 072
<b>CHASSIS 2</b>	48/50TC 07 FC06-07; 50TCQ 06-07; 48/50GC06, LC 05-06; 50HCQ 05-06; 50HCQ 05-06; 48HJ 007; 50TJ 007	580J, 558J 07; 548J 06-07; 581J, 551J 05-06; 549J 05-06	PAH, PGH, RAS, RGS 072; RAH, RGH, RHH 048-060; RHS 060-072
<b>CHASSIS 3</b>	48/50TC 08; 48/50HC 07; 50HCQ 07; 48/50 TJ, TF, TM 008-009; 48/50 HJ 008	580J, 558J 08; 581J, 551J 07; 549J 07	PAH, RAS, PGS, PHS 090; RAS, RGS 090-091; RAH, RGH, RHH 072; PGE, PAE 090-102
<b>CHASSIS 4</b>	48/50LC 07; 48/50HC 08-12; 48/50HCQ 08-09; 48/50TC 09-14; 50TCQ 08-12; 48/50 TJ, TF, TM 012-014; 48/50 HJ 009-014	580J, 548J 09-14; 548J 08-12; 581J, 551J 08-12; 549J 08-09	PAH, PGH 102-120; RAS, RGS 102-150; RHS, RAH, RGH 090-120; RHH 090-102; PAE, PAS, PGE, PGS 120-150; PHS 120
<b>CHASSIS 5</b>	48/50TC 16; 50TCQ 14; 48/50HC 14; 50HCQ 12; 48/50LC 08-12	580J, 558J 16; 548J 14; 581J, 551J 14; 549J 12	RAS, RGS 180; RHS, RGH 150; RHH 120
<b>CHASSIS 6</b>	48/50LC 14; 48/50HC 17; 48/50TC 17-20; 48/50TCQ 17	580J, 558J 17-20; 548J 17	RAS, RGS 210/213; RHS, RAH, RGH 181/183
<b>CHASSIS 7</b>	48/50HC 20; 48/50TC 21-24; 48/50TCQ 24	580J, 558J, 548J 24	RAS, RHS, RGSS 240/243; RAH, RGH 210/213
<b>CHASSIS 8</b>	48/50LC 17-20; 48/50HC 24; 48/50TC 25-28	580J, 558J 28	RAS, RGS 300/303; RAH, RGH 240/243
<b>CHASSIS 9</b>	48/50LC 24-26; 48/50HC 28; 48/50TC 29-30	580J, 558J 30	RAS, RGS 336/333; RAH, RGH 300/303

# TECHNICAL DATA SHEET

Code: NT-59-P  
Version: 1.0

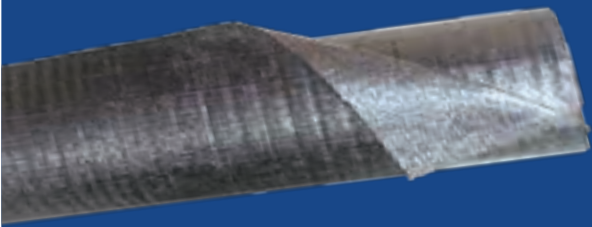


## REFLECTIVE THERMAL INSULATION

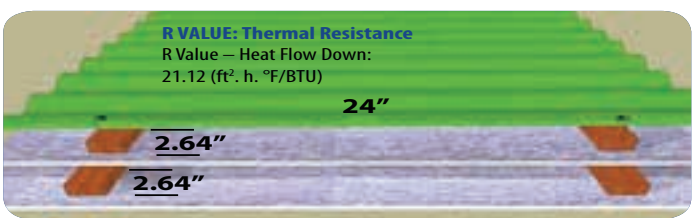
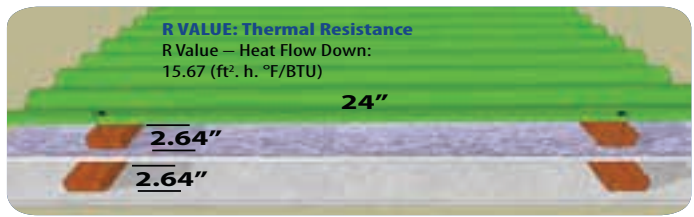
# Prodex **AD5** ALUMINUM FOIL + POLYETHYLENE FOAM + ALUMINUM FOIL

**0.20" closed cell polyethylene foam sandwiched between pure aluminum on both sides**

Reflective thermal insulation developed according to the highest standards of quality. Designed to save energy by eliminating radiant heat emitted by roofs, floors and walls.



AD 5 INSULATION (ALUMINUM FOIL + POLYETHYLENE FOAM + ALUMINUM FOIL)		
DIMENSIONS AND TOLERANCES OF THE STANDARD PRODUCT		
THICKNESS: 0.20 ± 0.013 (in)	LENGTH: ± 11 (in)	WIDTH: 4 ± 0.032 (ft)
TECHNICAL CHARACTERISTICS OF THE PRODUCT		
CHARACTERISTICS	VALUE	STANDARD
FOAM CELL STRUCTURE	CLOSED	-
AVERAGE WEIGHT OF ft <sup>2</sup>	0.0512lb/ft <sup>2</sup>	-
WATER RESISTANCE	WATERPROOF	Dir. UEAtc
WATER VAPOR TRANSMISSION	0.05 perms (gr/ft <sup>2</sup> *h*in.hg)	ASTM E 96/IRAM 1735
FLAME INDEX	0	ASTM E-84-99
SMOKE DEVELOPMENT	15	ASTM E-84-99
EMITANCE	0.03	ASTM C-1371-98
FUNGAL RESISTANCE	NO GROWTH	ASTM C 1338
CORROSIVENESS	PASS	ASTM C-1224
PLIABILITY	NO CRACKING	ASTM C-1224
HUMIDITY RESISTANCE	PASS	ASTM C-1224
BLEEDING AND DELAMINATION	NO BLEEDING / NO DELAMINATION	ASTM C-1258
TENSILE STRENGTH AT BREAK (MD)	10.4 LbF/inch	ASTM D-638
OPERATING TEMPERATURE	-4 °f / 176 °f	ASTM C-1224
R VALUE ( Heat Flow Down)	* A: 15.67; B : 21.12 (ft <sup>2</sup> -h-°F/Btu)	ASTM STP1116



- It is recommended a distance of 1.20 meters to 2.20 meters between supports
- Do not install at soffits when the insulation can be permanently exposed to UV radiation



[www.Insulation4Less.com](http://www.Insulation4Less.com)

Comfort in harmony with the environment